



---

## Catalogue Group tour: "Highlights of Namibia" October 2024

*Windhoek - Sossusvlei - Swakopmund - Twyfelfontein - Etosha South - Damaraland - Etosha East - Otjiwarongo*  
*11 Days / 10 Nights*

*Group Size: Minimum 4 passengers / maximum 7 passengers in a 'stretched Landcruiser' with a window seat, pop-up roof, and air conditioning.*

*Reference: GUIDEDNAM 10/24*

*Date of Issue: 17 October 2023*

---



## Introduction

### The NAMIBIA HIGHLIGHTS Tour

Embark on a journey to explore the fascinating highlights of Namibia on this extraordinary tour. Our specially modified "stretch Land Cruiser" proves to be the perfect safari vehicle designed specifically for such adventures. Inside its spacious interior, seven guests plus our experienced driver have ample room to relax and immerse themselves in the Namibian wilderness.

Each guest enjoys a premium window seat in the air-conditioned comfort of the vehicle, ensuring uninterrupted views of Namibia's stunning landscapes. However, the ultimate feature that sets our tour apart is the ingenious pop-up roof, which provides unparalleled opportunities for wildlife photography and observation.

By your side on this impressive journey is an experienced and knowledgeable guide who will lead you to Namibia's most coveted highlights. Prepare to delve deep into the heart of this extraordinary country, connect with its people, and immerse yourself in its culture as you traverse its breathtaking landscapes. This tour promises an enriching and unforgettable experience that will leave you with lasting memories of Namibia's beauty and charm.

Start	Accommodation	Destination	Basis	Duration
Day 1	Naankuse @ Utopia	Windhoek	D	<b>1 Night</b>
Day 2	Little Sossus Lodge & Camp Site	Sossusvlei	FB	<b>2 Nights</b>
Day 4	The Delight Swakopmund Gondwana Collection Namibia	Swakopmund	B&B	<b>2 Nights</b>
Day 6	Twyfelfontein Adventure Camp	Twyfelfontein	FB	<b>2 Nights</b>
Day 8	Etosha Safari Lodge Gondwana Collection Namibia	Etosha South	FB	<b>1 Night</b>
Day 9	Mokuti Etosha Lodge	Etosha East	FB	<b>1 Night</b>
Day 10	Mount Etjo Safari Lodge	Otjiwarongo	FB	<b>1 Night</b>

#### Key

B&B: Bed and Breakfast

D: Dinner

FB: Full Board - Dinner, Bed, Breakfast and Lunch

## Scheduled Departures

Departure Date	End Date	Price ( From )
22/10/2024	01/11/2024	€ 2999 Per Person Sharing

## Price

Arrival in Windhoek: October 22th, 2024

Departure from Windhoek: November 1st, 2024

- Person in a double room: € 3099
- Person in a single room: € 3499
- Child (4 - 12 years) in parents' room: € 2599

Surcharge for a group size of 4 to 5 people: € 400/person

## Included

- A diverse journey to the key highlights of Namibia
- Small group with a maximum of 7 people
- Guaranteed departure with a minimum of 4 people
- Guaranteed window seat
- Drinking water during the journey
- Travel in a safari vehicle with a pop-up roof
- Experienced guide
- Accommodations as described
- Numerous activities included
- Meals as specified
- National park entrance fees
- Comprehensive travel package

## Excluded

- Visa fees
- Unplanned activities
- Tips or gratuities
- Personal expenses
- Beverages or drinks
- International flights

## Day 1: Naankuse @ Utopia, Windhoek

---

### Windhoek

**Windhoek** is the capital of Namibia, where the incredible ethnic mix of the country comes together, and reflects the diverse influences of Ovambo, Caprivian, Kavango, Damara, Nama, San, Herero and European peoples in its wide range of architecture, restaurants and cultural attractions. It is nice and safe to stroll in the city center. The most recognized landmark of the capital is the 'Christuskirche', but a visit to the Old Brewery and its arts and crafts center is also recommended.

---

### Day Itinerary

#### Welcome to Namibia.

At the international airport near Windhoek, your guide will be waiting for you.

(Kindly note that the guide will only drive to the airport according to Euro Wings Discover flight times. If you have chosen a different flight, you must arrange and pay for an alternative airport transfer. Please inform us in advance, and we will be happy to assist you with the transfer arrangements.)

The guide will take you to the guesthouse in Windhoek. Here, the meet and greet will also take place, where the entire journey will be discussed in detail, and all your travel documents will be handed over to you.

The rest of the day is at your leisure to explore the city, do some shopping for the tour, or relax by the pool after the rigors of the journey.

Windhoek is the capital of Namibia and offers a variety of restaurants, shops, and accommodation options. The city is clean and well-organized. Notable sights in Windhoek include the Christuskirche, the Tintenpalast, and the Old Fort.

In the evening, the group will gather for a shared dinner at the guesthouse's restaurant.

Included: Airport transfer, dinner, water during the journey.

#### Overnight: Naankuse @ Utopia

The modern N/a'ankusê@Utopia establishment has allied with the neighboring Pension Bougainvilla and offers serene rooms and luxurious suites situated amid beautiful, green lush gardens. The hotel is conveniently located in the tranquil suburb of Klein Windhoek.

Utopia combines business and leisure in a modest manner, simultaneously welcoming modern travelers and tourists in need of relaxation. Boasting 14 standard rooms, 7 luxurious suites and 1 executive suite, N/a'ankusê@Utopia creates an ideal hideaway.



---

**Basis**  
Dinner

---

## Day 2: Little Sossus Lodge & Camp Site, Sossusvlei

---

### Sossusvlei

Located in the scenic **Namib-Naukluft National Park**, **Sossusvlei** is where you will find the iconic red sand dunes of the Namib. The clear blue skies contrast with the giant red dunes to make this one of the most scenic natural wonders of Africa and a photographer's heaven.

This awe-inspiring destination is possibly Namibia's premier attraction, with its unique dunes rising to almost 400 meters - some of the highest in the world. These iconic dunes come alive in morning and evening light and draw photography enthusiasts from around the globe.

Sossusvlei is home to a variety of desert wildlife including oryx, springbok, ostrich and a variety of reptiles. Visitors can climb 'Big Daddy', one of Sossusvlei's tallest dunes; explore Deadvlei, a white, salt, claypan dotted with ancient trees; or for the more extravagant, scenic flights and hot air ballooning are on offer, followed by a once-in-a-lifetime champagne breakfast amidst these majestic dunes.

---

### Day Itinerary

#### The oldest desert in the world

After breakfast, the journey takes you to the oldest desert in the world, the Namib.

The drive goes through Rehoboth and continues past the Naukluft Mountains and stunning desert landscapes.

The guide is happy to make a few photo stops along the way, and around noon, lunch packs will be provided for everyone.

In the afternoon, you will arrive at the beautiful lodge, where you can spend the rest of the day, preferably with a refreshing drink by the pool.

If you like, you can also take a short hike in the afternoon and enjoy the breathtaking scenery. With a bit of luck, you might spot some desert antelopes in the distance.

In the evening, there will be a shared dinner with a fantastic view at the lodge restaurant.

Included: Breakfast, lunch pack, dinner, water during the journey.

#### Overnight: Little Sossus Lodge & Camp Site

**A Little Sossus Lodge** is surrounded by the Nubib, Tsaris and Naukluft mountains with views of the distant dunes in the west. In this exquisite location, guests are accommodated in stylish stone chalets, built from the local occurring rock. A Little Sossus Lodge will ensure you an unforgettable stay in the tranquil desert surroundings. There is a cozy lounge, decorated with ethnic African décor and furnished with comfortable leather sofas. The swimming pool is in front of the main building, where guests can have a dip and unwind after a hard day's drive.




---

## Basis

Full Board - Dinner, Bed, Breakfast and Lunch

---

## Day 3: Little Sossus Lodge & Camp Site, Sossusvlei

---

### Day Itinerary

#### Day trip to the world-famous red dunes of Sossusvlei.

Early in the morning, the journey begins so that you can experience the beautiful morning light.

First, the drive takes you to Sesriem, the gateway to the Namib-Naukluft Park. It opens its gates at sunrise. Then, a narrow tar road leads you past stunning landscapes and towering dunes to Deadvlei and Sossusvlei. A roughly 1.5 km walk takes you across clay flats and a small dune to the ancient, dried-up acacia trees of Dead Vlei, which are now world-famous.

#### Information about Sossusvlei:

Sossusvlei is located in the Namib-Naukluft National Park, the largest nature reserve in Africa. The most famous photographs of Namibia undoubtedly come from Sossusvlei. The images with the intense red dunes and sharp lines are breathtaking. The dunes in this area are the highest in the world, reaching immense heights of almost 400 meters. Climb Dune 45 and enjoy the fantastic view over the sea of dunes. Another worthwhile stop is Deadvlei, a dried-up lake with tree stumps that has become an almost surreal landscape.

Sossusvlei means "dead-end marsh" because it is where the dunes come together, preventing the Tsauchab River from reaching the Atlantic Ocean. Due to the aridity of the Namib Desert, this river rarely flows that far, so the pan is dry most years. However, during a good rainy season, the Tsauchab River fills the salt pan, and visitors from around the world come to this area to experience this spectacular place.

Around noon, you can enjoy your lunch pack under the camelthorn trees at the dry pan of Sossusvlei.

Then, the journey takes you back to the entrance gate at Sesriem, where you can also explore the Sesriem Canyon.

In the afternoon, you will return to the beautiful lodge.

Included: Breakfast, lunch pack, dinner, water during the journey

Included activity: Excursion to Sossusvlei, Deadvlei, and Sesriem Canyon, including park fees.

## Activities

Dead Vlei
Sossusvlei
Sesriem Canyon

---

### *Dead Vlei*

This ancient clay pan was once an oasis, studded with acacias and fed by a river that suddenly changed course, leaving the earth to dry up along with the trees it previously supported. So dry were the climatic conditions that the trees never decomposed – instead they were entirely leached of moisture so that today, 900 years later, they remain as desiccated, blackened sentinels dotting the pan’s cracked surface. Surrounded by the red-pink dunes of the Namibia Desert, they create a surreal spectacle that is a photographer's dream.

### *Sossusvlei*

Located in the scenic **Namib-Naukluft National Park**, **Sossusvlei** is where you will find the iconic red sand dunes of the Namib. The clear blue skies contrast with the giant red dunes to make this one of the most scenic natural wonders of Africa and a photographer's heaven.

This awe-inspiring destination is possibly Namibia's premier attraction, with its unique dunes rising to almost 400 meters - some of the highest in the world. These iconic dunes come alive in morning and evening light and draw photography enthusiasts from around the globe.

Sossusvlei is home to a variety desert wildlife including oryx, springbok, ostrich and a variety of reptiles. Visitors can climb 'Big Daddy', one of Sossusvlei’s tallest dunes; explore Deadvlei, a white, salt, claypan dotted with ancient trees; or for the more extravagant, scenic flights and hot air ballooning are on offer, followed by a once-in-a-lifetime champagne breakfast amidst these majestic dunes.

### *Sesriem Canyon*

Sesriem Canyon, a deep chasm carved through the rocks by water, is a striking natural feature of the area that is best explored on foot. Stony walls rise up sharply on both sides of the canyon, while birds roost in its crags and lizards dart along the ledges. The canyon’s name was coined when early settlers used it as a water source, using six lengths of leather ('ses riem – six thongs) tied together to lower buckets into the water at the base of canyon.

---

## Basis

Full Board - Dinner, Bed, Breakfast and Lunch

---



## Day 4: The Delight Swakopmund Gondwana Collection Namibia, Swakopmund

---

### Swakopmund

Set along Namibia's spectacularly scenic coast, the seaside town of **Swakopmund** is known for its wide-open avenues, colonial architecture, and is surrounded by otherworldly desert terrain.

Now a seaside resort town, Swakopmund is the capital of the Skeleton Coast tourism area and has plenty to keep visitors happy. The quirky mix of German and Namibian influences, laidback atmosphere and cool sea breeze make it very popular Namibian destination. Visitors can look forward to a number of exciting activities including: quad biking, horse riding, paragliding, fishing, sightseeing and fascinating desert tours.

---

### Day Itinerary

#### Drive to the Wild Atlantic

On this route, the Namib Desert reveals itself from many different angles. You'll pass by mountains, red dunes, Gaub and Kuiseb Canyons, and later, the barren expanses of the Namib. On especially hot days, you may witness a phenomenon known as a Fata Morgana here. Along the way, you can often spot typical desert animals such as oryx, springbok, ostriches, and with a bit of luck, even a giraffe.

#### Stop for a slice of apple pie

The small gas station and rest stop, Solitaire, is an excellent place for a pit stop. It is conveniently located on your journey through southwestern Namibia and on the way to Swakopmund. In the small Solitaire Bakery, you'll find many delicious treats, including Namibia's best apple pie.

Once you reach the Atlantic Ocean, you can take a short trip to the port and lagoon of Walvis Bay. Many hundreds of flamingos often frolic in the shallow waters of the salty lagoon. From there, you'll drive the last 40 km on a beautiful paved road, always along the coast, to Swakopmund, probably the most Germanic town in the southern hemisphere.

#### Information and History - Solitaire

The area was named Solitaire by Elsie Sophia van Coller, the wife of Willem Christoffel van Coller. The name was chosen for two meanings. Solitaire can mean a single-set diamond, and Solitaire can also mean solitude or loneliness. The combination of these two meanings defines a unique and precious yet solitary place.

The first building on the Solitaire farm was a 2-room cottage built by Mr. Van Coller, who later also built the main house, a stone kraal next to the farmhouse, and a dam wall above the riverbed. He was also responsible for building the current shop and installing the first fuel pump. The store also served as a regional post office where mail bags were delivered weekly. In 1948, construction of a small chapel began. It was completed in 1951 and is still used by the local community. The church building also serves as a community meeting place where farmer association meetings, elections, and health clinics are held. In 1968, the 'Solitaire' farm was sold to a Mr. Maritz and has since changed hands numerous times. The two farms that make up Solitaire, the businesses, and other landholdings in the region are now part of the 45,000-hectare Solitaire Land Trust, focused on habitat conservation. This semi-arid region is home to healthy wildlife populations, including the endemic Hartmann's mountain zebra. Farm Solitaire begins at the Great African Escarpment and encompasses grasslands, gravel plains, ephemeral rivers, and extends to the edge of the Namib, one of the world's oldest deserts.

Included: Breakfast, lunch pack, water during the journey.

## Expert Tips

### Dinner in Swakopmund

Dinner is not included on the two days in Swakopmund, so each guest is welcome to walk to one of the many restaurants located near the hotel.

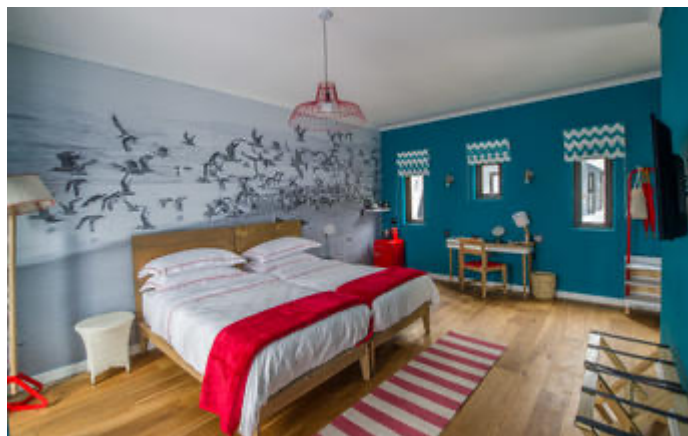
Here are some restaurant recommendations:

1. **Altstadt Restaurant:** Altstadt Restaurant is located in the heart of Swakopmund and offers a large beer garden surrounded by palm trees, indoor dining areas, and a cozy bar. Our diverse menu offers our customers the highest taste, quality, and excellent service. The focus is on German cuisine, including fresh seafood and steak dishes that you can enjoy with ice-cold beer. Reservations at +264 64 461 871 (We speak German)
2. **The Tug Restaurant: (Good seafood options on the menu)** The Tug started as a small beach restaurant and has grown over the years to become one of Swakopmund's largest and most visited places. The food is excellent, especially for seafood lovers. Reservations at +264 64 402356  
To avoid disappointment, we recommend making a reservation at all restaurants.
3. **Ocean Cellar Restaurant: (Good seafood options on the menu)** A relaxed, contemporary gourmet experience celebrating the essence of the Atlantic Ocean. Enjoy their exclusive World Oyster Journey, a culinary journey around the world, or choose from the freshest selection of seafood. Pair it with a bottle of wine from their extensive wine list and savor the moment while the gentle mist of the Atlantic Ocean reminds you of where you are. Reservations at +264 64 411 4532
4. **Brauhaus Swakopmund:** As the name suggests, this restaurant offers a brewery atmosphere similar to German beer halls. They brew beer in accordance with the German Beer Purity Law. The menu features many German dishes. The Brauhaus is famous for its delicious T-Bone Steak (500-700g), and seafood lovers will also find options here. The daily catch of fresh fish is always on the menu. Reservations at +264 (0)64 402 214 (We speak German)
5. **Butcher and Brewer:** This restaurant is located right on the promenade. The small brewery brews various craft beers, and the menu offers many delicious meat dishes and more. Reservations at +264 64 411 4410
6. **Gabriele's Italian Pizzeria:** One of the best pizza restaurants in all of Namibia! Reservations at +264 81 863 5020

### Overnight: The Delight Swakopmund Gondwana Collection Namibia

Amongst the town's captivating contrasts and old traditions, Gondwana's Delight is a fresh breeze in the desert. A refreshing, relaxing, modern, light and airy establishment to uplift and inspire. Effortless and comfortable, with the distinctively warm and welcoming Gondwana service and charm, your stay is always a memorable experience.

Location: Corner of Theo-Ben Guriab Avenue and Nathaniel Maxuilili Street in Swakopmund.



## Basis

Bed and Breakfast

## Day 5: The Delight Swakopmund Gondwana Collection Namibia, Swakopmund

### Day Itinerary

Discover the "Little 5" today or visit the seal colony in Walvis Bay.

Today, you have the choice of one of the two activities, which must be booked in advance with us.

#### Living Desert Tour

You will be picked up promptly at 8:00 AM by an activity operator at your hotel. Afterward, you will embark on a 4x4 adventure into the dune belt south of Swakopmund in search of the "Little 5."

This is an exciting journey where you will learn a lot about the dune ecosystem and its many fascinating inhabitants. You will be returned to your hotel around noon. The afternoon is free for you to further explore Swakopmund and its surroundings.

#### Boat Safari

These boat trips focus on observing marine life, primarily the Heaviside and Bottlenose dolphins, as well as the Cape fur seals. Enjoy a glass of champagne and the magnificent Walvis Bay oysters while these animals playfully accompany the boat. You will be picked up at the hotel reception tomorrow. The excursion starts at the port of Walvis Bay, from where you will travel by catamaran to Pelican Point, where the seals have also found a home.

You will be returned to your hotel in Swakopmund around noon.

Included: Breakfast

Included Activity: 1x activity (Living Desert Tour or Boat Tour)

#### Optional

Morning	Living Desert Tours
Morning	Catamaran Cruise - dolphins & seals sailing trip

### ***Living Desert Tours***

#### ***".. Where the desert comes alive.."***

- Passionate desert tour accompanied by an experienced guide
- Adventurous drive through the dunes
- A discovery to the living tracks in the desert (flora & fauna)
- Much to see, experience & photograph
- Including fruit juices / soft drinks / water
- Duration of the total activity is from 08:00 to 01:00

#### ***Catamaran Cruise - dolphins & seals sailing trip***

Enjoy an adventure packed tour to Pelican Point and Walvis Bay's beautiful bay area. The chances of encountering dolphins, whales, turtles, seals and Mola Mola (sunfish) make the search for the marine big 5 and adventurous tour by enjoying sparkling wine, fresh oysters and other mouth-watering snacks aboard the spacious and comfortable catamarans.

-Departs from Walvisbay (30 min. drive from Swakopmund)

- From about 08:30 to 12:30

---

### **Basis**

Bed and Breakfast

---

## Day 6: Twyfelfontein Adventure Camp, Twyfelfontein

---

### Twyfelfontein

Set in the Kunene Region of northwestern Namibia, **Twyfelfontein** is a spectacularly scenic area, featuring one of the largest and most important concentrations of rock art in Africa. The name 'Twyfelfontein' translates to 'Fountain of Doubt', which refers to the perennial spring situated in the impressive Huab valley flanked by the slopes of a sandstone table mountain.

It was this spring that attracted Stone Age hunters over six thousand years ago, and it was during this time that the extensive group of rock engravings and paintings were produced. Visitors can look forward to basing themselves at some wonderfully shady campsites along the Aba-Huab riverbed, while exploring over thirty different sites of these sacred records of ritual practices relating to traditional hunter-gatherer communities.

---

### Day Itinerary

#### The World Heritage Site of Twyfelfontein

Today, we leave the cold Atlantic behind.

From Swakopmund, we drive north along the Atlantic coast to Hentiesbaai. We then head inland, passing by Namibia's highest peak, the mighty Brandberg, which gets its name from the fiery glow that occurs when the last rays of the sun ignite it at the end of the day.

In the afternoon, we reach Twyfelfontein. There is an opportunity to visit the famous rock engravings and stone organs of Twyfelfontein this afternoon. You can arrange this with your guide. The entrance fees to these attractions are not included in the tour price and must be paid separately.

Included: Breakfast, lunch pack, dinner, water during the journey.

### Expert Tips

#### Information about the Skeleton Coast

The combination of fog, rough waves, and the unpredictable currents of the Benguela current in the Atlantic Ocean has always made Namibia's coast dangerous for whaling, shipping, and trade. Thousands of ships have fallen victim to the sea and now lie as wrecks along the coast. Sailors who managed to reach the coast had no chance of survival in the desert. Although the original name of this stretch of coast is based on the bones left there after hunting whales and seals on the beaches, a significant portion of these bones is actually from humans. Navigation along these waters is therefore rightly feared by many sailors.

#### Information about Twyfelfontein

Its international fame is due to the countless petroglyphs and engravings found in, under, and on the rocks of the valley. The drawings and engravings were created by the San people and are sometimes thousands of years old. Without a doubt, 2,500 inscriptions and several thousand drawings span the total number of rocks dating from 300 BC to the 19th century. Most engravings depict animals such as gemsbok, lions, elephants, and goats. Some show tracks and geometric figures that refer to water sources. Twyfelfontein has been on the UNESCO World Heritage List since 2007. You visit the drawings with an experienced guide from the local community and pay a small entrance fee. This not only ensures the protection of the petroglyphs but also supports the local population.

### Damara Living Museum

The Damara Living Museum near Twyfelfontein is the first traditional Damara project in Namibia and the only one of its kind. Nowhere else in Namibia or the world is there an opportunity to experience traditional Damara culture in this form. Along with the Bushmen, the Damara are among the oldest peoples of Namibia. Their original culture was a mix of an archaic hunter-gatherer culture and cattle, goat, and sheep herding. Due to their loose social structures, the Damara could not defend themselves against attackers during Namibia's colonization. This is one of the reasons why their culture has largely been forgotten.

Note:

In this area, you may encounter elephants. These are known as "desert elephants." They live in Damaraland and travel in search of water and food through various dried-up riverbeds. In these riverbeds, there are natural water resources at various points. There are entire theories about how these desert elephants would differ from the elephants living in Etosha National Park. In any case, these elephants are also gigantic and a spectacular sight.

### **Overnight: Twyfelfontein Adventure Camp**

Nestled in rolling boulders of a granite outcrop, Twyfelfontein Adventure Camp is conveniently situated a ten-minute drive from Twyfelfontein Rock Engravings, within walking distance of the Damara Living Museum and the Huab River Valley.

Accommodation at the property consists of 12 furnished en-suite tents with two beds, an open bathroom with a solar heated hot shower, basin and toilet and a shaded terrace with chairs. The 'Main tent', an open Lapa, gives space for restaurant area, a bar and pool deck.

Guests can also enjoy a scenic nature drive in the ephemeral Huab River and surrounding valley. It is an excursion exposing visitors to unique geological formations and the possibility of sighting the elusive desert-adapted elephants and rhinos.

A visit in the neighbouring Damara Living Museum can be done in own arrangement, it offers a fascinating look into the people, heritage, pulse and soul of Damaraland.




---

### **Basis**

Full Board - Dinner, Bed, Breakfast and Lunch

---

### **Day 7: Twyfelfontein Adventure Camp, Twyfelfontein**

---

#### **Day Itinerary**

**In Search of the Desert Elephants**

After breakfast, we venture into the dry riverbeds of the region in search of the famous desert-adapted elephants of the area.

These animals are on the move in the region almost all year round, but there are times when the elephants can be elusive.

Even if we may not succeed in finding the elephants, you will certainly be treated to stunning desert landscapes.

Included: Breakfast, lunch pack, dinner, water during the journey.

Included Activity: Desert safari in search of the desert-adapted elephants.

**Basis**

Full Board - Dinner, Bed, Breakfast and Lunch

---

## Day 8: Etosha Safari Lodge Gondwana Collection Namibia, Etosha South

---

### Etosha South

The **Etosha National Park** is a nature reserve in northern Namibia and one of the most important game reserves in Africa. It is by far the best-known national park in Namibia. Today the park covers an area of almost 22,300 km<sup>2</sup> and is completely fenced off, to protect the game!

In the park lies an approximately 5,000 km<sup>2</sup> large salt pan, which was formed by the drying out of the inland delta of the Kunene River and its shifting of the river bed about 2 million years ago.

By fencing the Etosha National Park, the animals living there are dependent on the available water and food supply. That is why the water supply takes place through water holes, some of which are of natural origin but are also supplied artificially.

---

### Day Itinerary

#### Namibia's Petrified Forest

On the journey towards Etosha National Park today, we will pass through the area of the petrified trees.

We will make a stop here to admire the mighty petrified tree trunks.

In the afternoon, we will arrive at the beautiful lodge located near the southern entrance gate to Etosha National Park.

You can spend the afternoon relaxing at the lodge or sign up for the afternoon safari (lodge activity).

Included: Breakfast, lunch pack, dinner, water during the journey.

Included Activity: Visit to the Petrified Forest, including park fees.

### Expert Tips

#### The Petrified Forest

The tree trunks here are between 240 and 300 million years old. The largest trunks are about 30 meters long and have a circumference of up to 6 meters. The longest specimen still has a diameter of nearly 1 meter at the upper end, indicating that the living tree was even larger.

Some of the trunks have broken into countless small pieces, but despite being millions of years old, you can still see the annual growth rings. Since the trunks do not show any remnants of roots, scientists believe that they are driftwood, which was likely washed here by a major flood, possibly from Angola.

Because the woods were initially covered airtight by sediments and then penetrated by silicic acid, they petrified over millions of years. Through erosion, they resurfaced.

#### Overnight: Etosha Safari Lodge Gondwana Collection Namibia

Etosha Safari Lodge is located 10 km south of Andersson Gate on the C 38 (Etosha National Park). Sip on a drink while watching the ruby sun dip into the mopane woodland. Perched on a hill with expansive views, this stylish lodge offers 65 chalets that provide a peaceful base from which to explore the animal bounty of Etosha National Park. A shuttle service operates between Windhoek and Etosha Safari Lodge and Camp (on request).





---

## Activities

Petrified Forest

---

### *Petrified Forest*

The Petrified Forest, located in the Kunene Region, showcases 280-million-year-old petrified trees from the Permian period. This remarkable site offers guided tours along a marked trail to view the stone-encased trees while interpretive signs explain its geological history. Visitors must preserve this national monument, making it a unique destination for those interested in Earth's ancient history and geology. Its arid desert location near Damaraland also provides opportunities for wildlife sightings, including desert-adapted elephants and oryx.

---

## Basis

Full Board - Dinner, Bed, Breakfast and Lunch

---

## Day 9: Mokuti Etosha Lodge, Etosha East

---

### Etosha East

Located in Northwestern Namibia, Etosha East is a protected sanctuary in the eastern part of the world-renowned Etosha National Park, known as one of the most accessible game reserves in Southern Africa. Etosha East boasts vast open plains scattered with semi-arid savannah grasslands dotted with watering holes and secluded bush camps. An impressive 5000-square-kilometre Etosha salt pan makes up a large area of the eastern side of the park and can even be seen from space. This remote area teems with abundant wildlife such as lions, elephants, black rhinos and giraffes, as well as a variety of birdlife featuring flamingos, ostriches, eagles, hornbills, and owls.

---

### Day Itinerary

#### The Etosha Safari

Our safari begins right after breakfast. We drive back into the park through the Andersson Gate.

From Okaukuejo, we drive along the southern edge of the salt pan. This area is very popular with animals, and due to the sparse vegetation, you have the opportunity to spot them from afar. It's a beautiful spot! We'll have a lunch break at the Halali rest camp.

Next, we visit the old German fort of Namutoni, which dates back to the time of the Schutztruppe (German colonial defense force).

We must exit the park no later than sunset. A lovely lodge awaits on the eastern side of the park.

Included: Breakfast, lunch pack, dinner, water during the journey.

Included Activity: Full-day safari through Etosha National Park, including park fees.

### Expert Tips

#### Some rules that must be strictly adhered to in the park:

1. Do not exceed a speed of 60 km/h.
2. You are not allowed to exit the vehicle unless you are at designated restroom/picnic areas.
3. No plastic bags in the park.
4. Raw animal products are not allowed to leave the park.

### Overnight: Mokuti Etosha Lodge

Arriving at Mokuti – a mere 40 metres from the Etosha Gate - is an experience on its own. A new contemporary safari experience greets you and will leave you speechless as you arrive at the Porte Cochere with its uninterrupted view through the lobby to the pool bar.

Known for its excellent and diverse wildlife encounters, it has become a popular venue for meetings, incentives, weddings and honeymoons. This intimate lodge has 90 rooms and 16 luxury rooms.

The gardens are magnificent, with cool rippling water features that accompany you as you step out of the lobby to the water lounge. Uninterrupted views and gardens that interact with the living spaces create an inviting, friendly, comfortable and relaxing atmosphere, which sets the tone for your stay at Mokuti Etosha.



---

**Basis**

Full Board - Dinner, Bed, Breakfast and Lunch

---

## Day 10: Mount Etjo Safari Lodge, Otjiwarongo

---

### Otjiwarongo

Set on the TransNamib railway in central-north Namibia, near Etosha National Park, Otjiwarongo, meaning 'the place of fat cattle', is an affluent town with a suburban feel and numerous attractions. The town is known for its excellent conservation projects, which include several parks protecting large wild cats, such as the famous Cheetah Conservation Fund, and the Crocodile Ranch, where visitors can view and learn about these fascinating creatures. Hiking, guided nature walks, and safaris are popular activities. The lively, traditional craft market adds appeal. History enthusiasts should make sure to visit the Locomotive No 41 monument, and the culturally significant site of the Battle of Waterberg on the Waterberg Mountain.

---

### Day Itinerary

#### Mount Etjo's Animal Paradise

Today, we travel on good paved roads to the vast Okonjati Nature Reserve.

By midday, we will arrive at Mt Etjo, where you can enjoy lunch at the lodge restaurant while overlooking the waterhole.

For the afternoon, a safari is booked where you can observe a wide variety of animals.

Even from the restaurant terrace, which overlooks an adjacent waterhole, there is plenty of action, making the visit to Mt Etjo a perfect way to round off the tour.

Included: Breakfast, lunch pack, dinner, water during the journey.

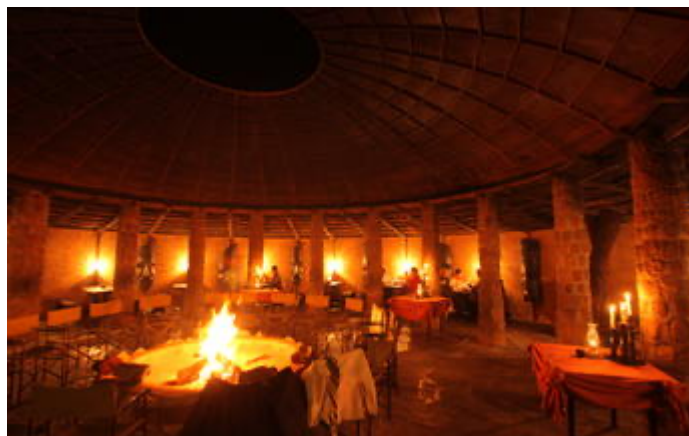
Included Activity: Afternoon safari

#### Overnight: Mount Etjo Safari Lodge

'Etjo' means a place of refuge. Since 1975 Mount Etjo Safari Lodge has been the heart of the Okonjati wildlife sanctuary, offering African wildlife and guests from around the world more than just a place to stay, but a safe haven, tranquil surroundings and the opportunity to engage in the pristine beauty of African wilderness. At Mount Etjo Safari Lodge, the African traveller will leave with his heart and mind enriched and his soul set at ease by having found peace and harmony in the African natural world.

The vibrant bird life at the Lodge is testimony to the beautiful gardens at the Lodge. Enormous palm trees, endless grass fields and a flamingo pond invite you to take a walk and a look around. The Lodge is built to face a large lake where animals regularly quench their thirst and hippos come to visit. Further in the distance lingers the magnificent Mount Etjo mountain, completing the picturesque scenery.

The unique architecture of our rooms, furnished and beautifully decorated in a splendid combination of luxury and African style will contribute to the exceptional experience of staying at Mount Etjo Safari Lodge. The Lodge is furnished with 22 luxury rooms, each with en-suite bathroom. Most of the rooms are situated next to the swimming pool which overlooks the watering hole where numerous animals come to drink during the day and night, while others overlook the spacious garden where the flamingos frolic. Various types of accommodation is available to suit the personal needs of young and old. The Lodge is fully wheelchair-friendly.



---

**Basis**

Full Board - Dinner, Bed, Breakfast and Lunch

---

## Day 11: End of Itinerary

---

### Day Itinerary

#### Departure Day

For those who wish, you can join a guided safari early in the morning today.

Afterward, we depart for Windhoek, which we will reach by midday.

Upon arrival in Windhoek, your guide will take you to a good restaurant where you can spend some time.

In the afternoon, the journey continues to the International Airport near Windhoek, where the farewell takes place.

(Please note that the guide will only drive to the airport according to Euro Wings Discover flight times. If you have chosen a different flight, you will need to organize and pay for an alternative airport transfer. Please inform us in advance, and we will be happy to assist you with the transfer arrangements.)

You are also welcome to book an extension tour. Our team is always available to provide advice.

We hope you had a wonderful tour of Namibia's highlights.

With many regards,

Your MEINE NAMIBIA SAFARIS Team

## Transport

---

### Transfers

Date	Company	Pick Up	Drop Off	Time	Vehicle
		Hosea Kutako International Airport [WDH]	Naankuse @ Utopia		Transfer
		Naankuse @ Utopia	Little Sossus Lodge & Camp Site		Transfer
		Little Sossus Lodge & Camp Site	The Delight Swakopmund Gondwana Collection Namibia		Transfer
		The Delight Swakopmund Gondwana Collection Namibia	Twyfelfontein Adventure Camp		Transfer
		Twyfelfontein Adventure Camp	Etosha Safari Lodge Gondwana Collection Namibia		Transfer
		Etosha Safari Lodge Gondwana Collection Namibia	Mokuti Etosha Lodge		Transfer
		Mokuti Etosha Lodge	Mount Etjo Safari Lodge		Transfer
		Mount Etjo Safari Lodge	Hosea Kutako International Airport [WDH]		Transfer

---

### Urgent Contact Numbers

Company Name	Telephone	Email Address	Contact Person
Meine Namibia Safaris	+264 (0)61 304 713	info@explore-africa-travel.com	
Explore Africa Travel (Pty) Ltd.	+264 (0)61 304 713	info@explore-namibia.com	Explore Namibia Windhoek
Explore Africa Travel (Pty) Ltd. - Emergency Contact	+264 (0)81 473 1416		

## Travel Information



Located in southwestern Africa, Namibia boasts a well-developed infrastructure, some of the best tourist facilities in Africa, and an impressive list of breathtaking natural wonders. Visitors can explore the capital of Windhoek and discover the lovely coastal town of Swakopmund boasting remnants of the country's German influence, reflected in the architecture, culture, cuisine and the annual Oktoberfest celebrations. To properly appreciate this extraordinary country, you will have to venture out of the cities to explore the remarkable natural landscapes Namibia has to offer. These include: the impressive Fish River Canyon; the vast Etosha National Park teeming with abundant wildlife, such as lions, desert-adapted elephants and the Hartmann's Mountain Zebra; the hauntingly beautiful Kalahari Desert; and of course the Namib Desert stretching for over 2000 km along the magnificent Atlantic Coast. Namibia is an ideal destination for travellers seeking an unforgettable African experience in a uniquely beautiful untamed wilderness.

### *Entry Requirements*

#### **Passport and driving licence**

A journey can only start with a valid passport. Do check if the passports of all participants are valid for 6 more month from the date that you again depart from Namibia or Botswana.

Attention: When flying over and staying in South Africa and/or Botswana with children under 18 years it is required to have a unabridged birth certificate with you for these children. When a child travels with only one parent mentioned on the birth certificate it is required to have a written letter of consent with you of the parent not joining.

When one wants to rent a car the renter has to show a valid driving licence. Valid driving licences are: international drivers license, European Union driving licence, any national driving licence in English. National driving licences without mentioning in English "driving licence" must be accompanied by an officially certified translation in English. A driver needs to be at least 25 years old to be allowed to hire and drive a car.

### *Banking and Currency*

#### **Currency**

Namibia uses the Namibian Dollar (N\$) this is linked on a one to one exchange with the South African Rand. The Rand is legal tender in Namibia, but the N\$ cannot be used in South Africa.

If you are wishing to purchase currency before arriving in Namibia, it is easiest to buy Rand as the Namibian Dollar is seldom available in banks outside of Namibia.

#### **Banking**

Banks are found in most towns, and are generally open from 09h00 to 15h30 on weekdays and 08h30 to 11h00 on Saturdays. Closed on Sundays and public holidays. Most of them offer foreign exchange services - with cash, bank and credit cards as well as travellers cheques.



You can also obtain cash from many of the ATMs. Several international banks have branches in main city centres. Always advise your bank that you are travelling outside of the country as they might block your purchases if they have not been informed.

### **Money matters**

Master and Visa credit cards are in generally accepted in Namibia. For money withdrawals at ATM's at the different banks (except Bank Windhoek) you can use the normal debit cards (Maestro).

In Botswana the Visa credit card is mostly accepted. Money withdrawals with normal debit cards are usually not possible. For Botswana it is recommended to take USD and/or EUR cash. For crossing the border of Zimbabwe and a visit to the Victoria Falls you will need USD.

### ***Travel, Transport and Getting Around***

Public transport in Namibia is geared towards the needs of the local populace, and is confined to main roads between major population centres. Although cheap and reliable, it is of little use to the traveller as most of Namibia's tourist attractions lie off the beaten track.

It is easy to travel around Namibia by car, and a 4WD vehicle is perfectly adequate both tarred and gravel roads. However, long distances, poor mobile phone coverage outside of main towns and infrequent petrol stations that only accept cash mean that planning ahead is vital.

There are major airlines that fly into Windhoek and Swakopmund. Other destinations are reachable by car or charter flight.

Namibians drive on the left and all signposts are in English. Seat belts must be worn at all times and talking in a mobile phone while driving is prohibited. The general speed limit is 100km/h on tarred roads outside of towns and 80km/h on gravel roads. In built up areas, the speed limit is 60km/h.

### ***Health and Medical Information***

#### **Travel healthy**

Beside taking the normal 'travel pharmacy' it is important to get informed about the necessary vaccinations. The DTP vaccination (Diphtheria, Tetanus en Polio) and Hepatitis A vaccination are recommended. The Hepatitis B en typhoid vaccination are only necessary depending on the nature, duration and length of the stay. A Yellow fever vaccination is only mandatory when travellers come from a yellow fever area.

During summer (December – April) the risk of getting malaria is higher than during wintertime (May – October). When you visit the far north of Namibia, the Caprivistrip, the Okavango Delta and/or the Victoria Falls in Zimbabwe, it is certainly recommended to take malaria prophylaxis. Also take necessary preventions, such as wearing protective clothes, and using anti-mosquito remedy, preferably with the ingredient DEET.

For professional advise contact your doctor or travel clinic.

### ***Food, Drink and Cuisine Advice***

Traditional Namibian cuisine is rarely served and so the food at restaurants tends to be European in style and is, generally, of a very high standard.

Namibia is very meat-orientated, and many menu options will feature steaks from various animals. However, there is usually a vegetarian and seafood section offered by most camps and restaurants.

In the supermarkets you'll find pre-wrapped fresh fruit and vegetables (though the more remote the areas you visit,

the smaller your choice), and plenty of canned foods, pasta, rice, bread, etc. Most of this is imported from South Africa.

The water in Namibia's main towns is generally safe to drink, though it may taste a little metallic if it has been piped for miles. Natural sources should usually be purified, though water from underground springs and dry riverbeds seldom causes any problems. However, filtered and bottled water are readily available in most towns and all camps, lodges and hotels.

### *Climate and Weather*

Partially covered by the Namib Desert, one of the world's driest deserts, Namibia's climate is generally very dry and pleasant – it's fine to visit all year round. Namibia only receives a fraction of the rain experienced by countries further east. Between about **December to March** some days will be humid and rain may follow, often in localised, afternoon thunderstorms. These are more common in the centre and east of the country, and more unusual in the desert.

**April** and especially **May** are often lovely months in Namibia. Increasingly dry, with a real freshness in the air, and much greenery in the landscape; at this time the air is clear and largely free from dust.

From **June to August** Namibia cools down and dries out more; nights can become cold, dropping below freezing in some desert areas. As the landscape dries so the game in the north of the country gravitates more to waterholes, and is more easily seen by visitors. By **September and October** it warms up again; game-viewing in most areas is at its best, although there's often a lot of dust around and the vegetation has lost its vibrancy.

**November** is a highly variable month. Sometimes the hot, dry weather will continue, at other times the sky will fill with clouds and threaten to rain – but if you're lucky enough to witness the first rains of the season, you'll never forget the drama.

### *Clothing and Dress Recommendations*

Namibians have a somewhat relaxed attitude to dress codes. A jacket and tie is very unusual. In fact, long trousers and a shirt with buttons are often quite adequate for a formal occasion or work wear. A pair of sensible shoes, jeans and a t-shirt is recommended.

During the day it is generally hot, so pack light weight loose fitting clothes in natural fabrics, such as linen or cotton, that will keep you cool and are easy to wash and dry.

Keep in mind that the 'winter'-month will require you to take a warm set of cloth for the cold evenings.

### *Internet Availability*

Telecom Namibia offers a service called wi-space. You purchase a wi-space voucher that allows you to connect to WiFi wherever you see the wi-space logo (about 40 locations in Namibia).

Alternatively good WiFi access is available at most holiday accommodation venues across the country (free / paid).

### *Electricity and Plug Standards*

Electrical sockets in Namibia are Type M (SABS-1661). If your appliance's plug doesn't match the shape of these sockets, you will need a travel plug adapter in order to plug in. Travel plug adapters simply change the shape of your appliance's plug to match whatever type of socket you need to plug into. If it's crucial to be able to plug in no matter what, bring an adapter for all types.

Electrical sockets in Namibia usually supply electricity at 230 volts AC / 50 Hz frequency. If you're plugging in an appliance that was built for 230 volt electrical input, or an appliance that is compatible with multiple voltages, then an adapter is all you need. If your appliance isn't compatible with 230 volts, a voltage converter will be necessary.

### *General Guidance*

#### **Securities**

Explore Namibia is an official member of the NTB (Namibian Tourism Board). This is a government institution that oversees the quality of the tourism industry in Namibia. Furthermore, Explore Namibia is a member of the TASA (Tourism Association Southern Africa). This organization monitors the observance of all kinds of rules in tourism in southern Africa.

At the moment of booking a 25% deposit is required. The outstanding amount is due 6 weeks prior to arrival in Windhoek. An official invoice will be send to you. This can also be used for arranging a travel and cancellation insurance.

Payment can be done directly on to our European bank account.

---

## Terms and Conditions

### Itinerary Terms and Conditions

Execution guarantee from 4 persons.

Changes reserved by the organizer.

### Meine Namibia Safaris Terms and Conditions

#### TERMS AND CONDITIONS

##### 1. General

1. In the context of these conditions the following parties are mentioned:
  1. Booking agency; the company or the person that is working in the name of the company, which offers organized trips, car rental and/or accommodation to the public, private persons or a group of private persons.
  2. Travel agreement; the agreement between the booking agency and the customer of the organization, reservation and/or booking of an organized trip, car rental and/or accommodation for a period of at least 24 hours including at least two of the following services:
    1. Transport;
    2. Accommodation;
    3. Any other item not related to transport or accommodation that is a significant part of the trip.
  3. Main booker:
    1. The contract party of the booking agency, or
    2. The person participating in the offered trip, or
    3. The person who is acting on behalf of the person participating in the trip.
  4. Agent; the company that is acting as an intermediate between the traveler and the booking agency with respect to the travel agreement.
  5. Working days; the days Monday till Friday, excluding official holidays.
  6. Office hours; the days Monday till Friday from 09.00 - 17.00.
2. These conditions apply for all travel agreements between any of the parties as per above. The booking agency can make these conditions applicable for other publications as well, if clearly mentioned in the concerned publication.
3. If the number of days is mentioned in the (published) travel agreement, then the day of arrival and the day of departure are counted as whole days. This could mean that the exact number of days of the actual stay is less than the number mentioned in the (published) travel agreement.
4. The travel agreement is official, valid and binding as soon as the main booker accepts the offer of the booking agency. The acceptance can be made directly or by means of an agent (intermediate). After acceptance of the travel agreement, the main booker will receive the written confirmation electronically, just as confirmation or in terms of an invoice.
5. The main booker:
  1. Has to inform the booking agency before or ultimately at the moment of the acceptance of the travel agreement about all personal details of him/herself as well as the participating travelers that could be important for the acceptance of the travel agreement or its execution.
  2. If the person who is accepting the offer, or who is accepting the offer on behalf of another, fails to do so, and this results in cancellation of one or all participating travelers, the related

costs will be charged to the main booker and he/she is personally liable for all obligations of the accepted travel agreement.

3. All communication, including payment procedures, with the booking agency will be solely dealt with by the traveler or main booker who accepted the travel agreement.
1. The main booker accepts, that at the moment the travel agreement is in force, a deposit of 25% of the total amount payable has become due immediately.
  2. If the main booker's deposit or payments are not received on time by the booking agency, interest rate of 15% on the amount payable will be calculated, plus any possible (legal) costs.
  3. Full payment of the balance becomes due at least six weeks before the day of departure. If the full payment is not made, then the main booker has failed to meet the conditions of the contract. The booking agency will inform the main booker in writing of a final chance to fulfill the obligations by paying the full amount within seven working days. If the payment is still not received by the booking agency, the travel agreement is considered cancelled by the main booker. The booking agency has the right to keep the deposit as cost of cancellation. No refund will take place.
  4. If the travel agreement is accepted within six weeks before the day of departure, full payment is due immediately.
  5. All rates include VAT, local taxes, car rental including maintenance, unlimited mileage, airport transfers (limited to Windhoek), standard car insurance and accommodation in chalets, hotels and lodges or on campsites as mentioned in the chosen route; unless otherwise and explicitly indicated as EXCLUDING.
  6. The published rates are per person, unless specified otherwise. Included in these rates are all services as described in the publication.
  7. The published rates are based on price levels, exchange rates, levies, taxes, etc. as known by the booking agency at the moment of publishing and are not to be published to third parties or valid for future bookings.
  8. Until the moment the full payment is received by the booking agency, the booking agency reserves the right to increase the rates caused by changes in transport costs, taxes, levies and exchange rates. The booking agency will always strive to inform the main booker about the calculation method of the increase but is not obliged to do so.
  9. If a travel agreement is cancelled by the main booker, additionally to any direct costs of reservation (e.g. prepayments to lodges/hotels/car hires etc.), the following cancellation fees apply:
    1. Cancellation until the 42nd day (excluding) before the day of departure: the deposit of 25%;
    2. Cancellation from the 42nd day (including) until the 28th day (excluding) before the day of departure: 35% of the full amount payable;
    3. Cancellation from the 28th day (including) until the 21st day (excluding) before the day of departure: 40% of the full amount payable;
    4. Cancellation from the 21st day (including) until the 14th day (excluding) before the day of departure: 50% of the full amount payable;
    5. Cancellation from the 14th day (including) until the 7th day (excluding) before the day of departure: 75% of the full amount payable;
    6. Cancellation from the 7th day (including) until the day of departure: full (100%) amount payable.
  10. Cancellation of the travel agreement:
    1. by one of the participating travelers is considered a cancellation of all agreements, resulting in cancellation fees for all travelers as outlined in point 14.

2. If the other participating travelers are willing to continue with the agreement, and the reduced number of participating travelers is possible according to the travel proposal, then the travel agreements are still considered as valid. Point 15c is then applicable.
  3. The travelers mentioned in point b will be liable to pay the rates as mentioned for the (reduced) number of participants.
11. Cancellations submitted outside official office hours are considered to be submitted on the first next working day.
1. The booking agency reserves the right to cancel all agreements due to significant and unforeseen circumstances without specifying any reason. The cancellation must be submitted in writing and within a reasonable term. If this should be the case, the traveler will be refunded with the amount he / she already paid to the booking agency. The travel agency will not be responsible for any expenses made outside the travel agreement e.g. for flights. Cancellation policies apply.
  2. Cancellation of an accommodation:
    1. If the main booker or a traveler causes any cancellation in an accommodation due to the traveler's behavior upon arrival, then all costs related to the cancellation(s) will be charged to the traveler.
    2. If any cancellation of an accommodation is caused by the booking agency, then all cost related to the cancellation(s) will be covered by the booking agency.
  3. The travelers should adhere to all instructions given by the booking agency in order to have proper execution of the travel agreement. The main booker is liable for any damage resulting from not adhering to these instructions.
  4. The traveler who is:
    1. not adhering to the rules of the booking agency or,
    2. is causing trouble of any kind, and therefore causing difficulties in the execution of the travel agreement, can be suspended from the trip, or the booking agency can decide to cancel the travel agreement completely. All costs related to the difficulties or cancellations will be charged to the main booker.
  5. The main booker is obliged to avoid and reduce any possible damage as much as possible.
  6. If during a trip, any unexpected circumstances (such as car accidents, delays, etc.), require changes in the planned travel schedule, then the booking agency will try to make corresponding changes in the travel plan where possible. But the booking agency is not obliged to do so, and all costs related to these changes will be charged to the main booker.
  7. Any mistakes made, in publications, communications, price calculations or else, are not binding to the booking agency and may be corrected. The kind of mistakes referred to here - from the perspective of an average traveler - should be easily recognizable by the traveler.
  8. Acceptance of the agreement:
    1. After acceptance the main booker can request an adjustment of the agreement. Until six weeks before the date of departure these changes will be incorporated as much as possible and confirmed by the booking agency in writing.
    2. The booking agency can charge the main booker an admin fee plus the accommodation / camping site cancellation fee per change as cost of adjustment, when adjustments are made within 6 weeks upon arrival or upon arrival.
    3. Postponement of the date of departure or reducing the number of participating travelers after 6 weeks upon arrival is considered as a (partial) cancellation, as most accommodation have 6 weeks cancellation policy. Cancellation fees will apply.

9. Before the execution of the travel agreement, the main booker is allowed to replace a participant traveler by another person. For this, the following conditions apply:
  1. the person replacing accepts all agreed conditions and agreements; and
  2. the request for replacement should be submitted at least 7 working days before departure; and
  3. the conditions of other parties involved (hotels, accommodations, etc.) do not reject such a replacement;
  4. The main booker, the traveler to be replaced and the traveler who is going to replace, are liable for the full payment of the (rest of) the total amount payable, including possible costs of adjustment, communication costs and other possible costs related to the replacement.
  
1. The booking agency is obliged to execute the agreement in line with the main booker's expectations, as long as these expectations are reasonable.
2. If the trip is not in line with the main booker's expectations upon arrival, then he/she is obliged to inform the booking agency and parties involved immediately, making it possible for the booking agency and parties involved to come up with a suitable solution. The booking agency will try to help and assist the traveler wherever they can.
3. The booking agency accepts no responsibility for wrong information in photos, brochures, advertisements, websites or what so ever published by third parties, nor for any products or services offered by party vendors (hotels, airlines, etc.). The booking agency will in no way be held responsible for any negligence, inconvenience, delay, loss, or injury caused by such vendors.
4. The traveler should be in the possession of a valid traveler's document, such as a valid passport, visa if applicable, medical passports, and a valid driver's license. If the traveler fails to do so and will therefore not be able to participate in (a part of) the trip, all costs related to this matter will be charged to the traveler.
  1. Children under the age of 18 should in addition to the children's passports, carry their Full birth certificates.
  2. Adults travelling with children that are not their biological children are advised to provide an affidavit from the child's biological parents or legal guardians that the child is travelling with consent of the biological parents and legal guardians internationally; and have contact details of the biological parents or legal guardian of the child.
  3. If a child is travelling with only one parent, the other parent (registered as a parent of the child on the birth certificate) must provide consent for the child to travel with the other parent.
  4. Where applicable, provide a copy of a death certificate of the other parent registered as a parent of the child on the birth certificate.
  5. Any unaccompanied minor shall produce proof of consent from one of or both his or her parents or legal guardian, as the case may be, in the form of a letter from the person who is to receive the child; containing his or her residential address and contact details where the child will be residing; a copy of the identity document or valid passport and visa or permanent residence permit of the person who is to receive the child; and the contact details of the parents or legal guardian of the child.
5. The main booker is fully responsible for arranging or not, a comprehensive travel (cancellation) insurance and a medical travel insurance.
6. Reduced liability:

1. In case any official documents apply by law, causing a reduced liability to any service provider, then this reduced liability also applies to the booking agency.
2. The booking agency is also not liable for any costs that are covered or could be covered by any insurance such as cancellation or travelers (medical) insurance.
7. The booking agency cannot be held liable for any (personal) damage or death of the participating travelers, nor for any other damage resulting from these tragic events.
8. All exemptions or exceptions in these conditions concerning the liability of the booking agency also apply for the employees, management and owners of the booking agency, unless lawfully not permitted.

## 2. Car Rental

1. The main booker will enter a direct agreement with the car rental company concerning the car rental. The booking agency is no party in this and cannot be held liable for any difficulties, problems or damage what so ever.

1. The terms and conditions of the car rental company apply at all times for the car rental. If there any deviations between the conditions of the booking agency and the conditions of the car rental company, then the conditions of the car rental company apply concerning the car rental specifically.
2. The booking agency and the car rental company reserve the right to substitute the booked vehicle with a similar one or an upgrade.
3. All vehicles are hired subject to a standard Rental Agreement (RA) to be signed at the office of the car rental company.
4. The minimum rental period is 6 days. Daily rates are calculated on a 24-hour basis from time of pick-up to time of drop-off.
5. Extensions of the rental period must be arranged with the booking agency no later than 2 days (48 hours) prior to the agreed date of termination. This extension cannot be guaranteed, as it depends on the availability of the vehicle.
6. The car insurance policy is reserved for the rental company, in which the vehicle was booked by the travel agency.
7. Long term and one-way rentals (e.g. pick up in Windhoek and return in Maun) are available on request.
8. A valid and unendorsed driver s' license must be produced by the main booker/driver. Valid drivers' licenses are: an international drivers' license, an European drivers' license, any national drivers' license in English. An official certified translation in English must accompany national drivers' license if it should be in another language than English.
9. Minimum permitted age of the driver(s) is 25 years unless prior approved in writing by management.
10. Additional permitted drivers are charged a daily fee.
11. No vehicle may be taken outside the country without prior approval and a cross-border permit.

## 2. Accommodation

1. The main booker has a direct agreement with the accommodations concerning their stay at the specific accommodation. The booking agency has no party in this and cannot be held liable for any difficulties, problems or damage or what so ever.
2. The conditions of the accommodation apply at all times. If there are any deviations between the conditions of the booking agency and the conditions of the accommodation, then the conditions of the accommodation apply concerning stay at this accommodation.
3. The booking agency reserves the right to substitute the booked accommodation with a similar one.

## 3. Personal Data



1. The booking agency collects some personal data of travelers but limits this data to only what is necessary to facilitate the (published) travel agreement and its related requirements safety measures, emergency contacts etc.
2. The booking agency assures the client that his/her data is kept safe and confidential at all times and will not be shared freely with third parties, without the traveler s' explicit consent.
3. The booking agency makes use of a review system and platform solely for the purpose of collecting reviews about the booking agency and the traveler s' experience after the travel agreement is completed. For this purpose, the booking agency submits the travelers 'first names, e-mail address(es) and booking reference to the Platform in order to collect the reviews. In the case, where a traveler, does NOT agree that his/her above details are to be shared, the traveler agrees to notify the booking agency thereof and with all concerned details in writing. For more information on the Data Protection Policy please see our Privacy Statement.